

SUSTAINABLE AND INDIVIDUAL

PICK-UP

Practically unbeatable
as a city transporter



Eco-friendliness

In the long term, 8 to 23 percent of journeys in German commercial transport could be taken over by PICK-UPS. This has positive consequences for the environment:

CO₂ emissions when using the PICK-UP in comparison:

*1 person per 100 km

0,4 kg

instead of
Ø16.95 kg when
using a car*

50×

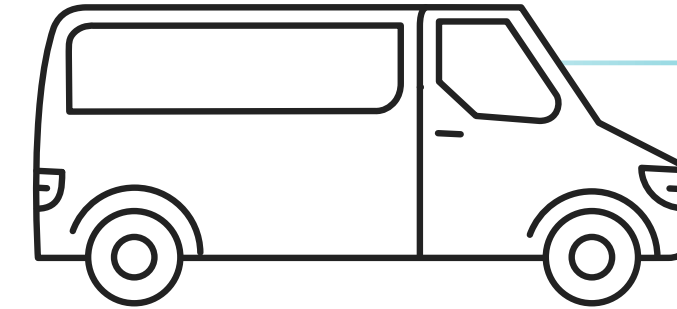
fewer emissions
than a petrol
or diesel engine*

7 Liter

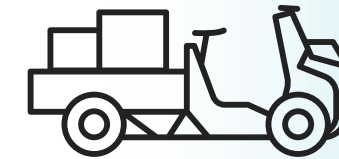
boiling water or
driving 100 km
PICK-UP

Range

85 percent of tradesmen, retailers and parcel delivery drivers cover an average of 70 to 100 km in daily city traffic in Germany – a distance that the PICK-UP can also cover.



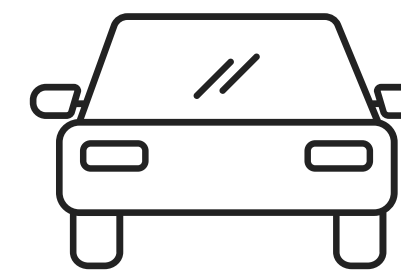
70 to 100 km daily route



up to **100 km** range

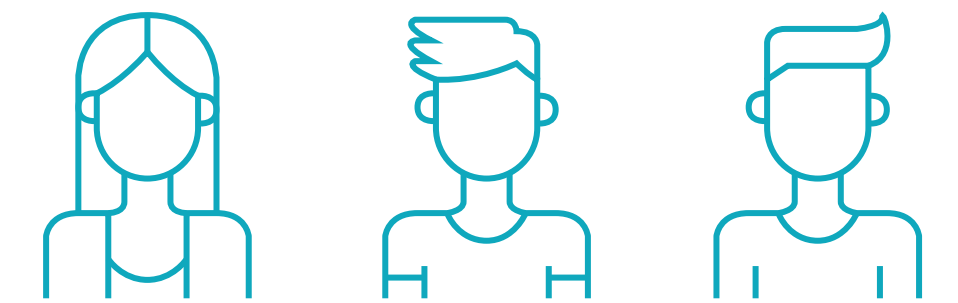
Easy parking

Deliver directly to the door. Three PICK-UPS take up as much space as a car.



Driving licence

Fewer and fewer young people in Germany have a car driving licence.



20%

of Germans up to the age of 24 do not
have a car driving licence

Source: Bikes.de

Source: GDV Gesamtverband der Versicherer e.V.

Source: Mobilitätsanalyse VW Nutzfahrzeuge